



MEREDITH AREA

Chamber of Commerce

IN THE
HEART
OF THE
LAKES
REGION

ABOUT THE MEREDITH AREA › 1

ENJOY ALL SEASONS › 2

NEIGHBORING TOWNS › 3-4

LAKE LIFE › 5-6

TRAILS YEAR ROUND › 7-8

BRING HISTORY TO LIFE › 9

LIVE WORK & MAKE MEMORIES › 10

THINGS TO SEE & DO › 11-14

SPECIALTY SHOPS & CRAFTS › 15-16

FOOD & SPIRITS › 17-19

WHERE TO STAY › 20-22

REAL ESTATE & VACATION RENTALS › 23-24

SPECIALIST & PROFESSIONAL SERVICES › 25-26

PRO SPOTLIGHT › 27

HOME SPECIALISTS › 28

MACC MEMBERS › 29-30

ABOUT THE MEREDITH AREA



Jeremy Noyes Gallery

The Meredith Area is truly the heart of the Lakes Region and also serves as the latchkey to New Hampshire's majestic White Mountains.

A tourist favorite for generations, this area's historic villages are nestled among New Hampshire's largest lakes – Winnepesaukee, Squam, Newfound, Waukegan, Winnisquam, Kanasatka, Wicwas, Pemigewasset, and Winona.

Our historic old-fashioned charm and friendly atmosphere blends with the natural beauty of lakes and mountains in the quaint towns of Meredith, Weirs Beach, Center Harbor, Moultonborough, Holderness, Ashland, Sandwich, Wolfeboro, Bristol, Gilford, and New Hampton.

The picturesque town of Meredith is set on the shores of Lake Winnepesaukee, greets visitors with unsurpassed beauty and a tradition of sincere New England hospitality. Offering a wide variety of restaurants, distinctive boutiques, arts and crafts galleries, and a myriad of antique shops, there is something for everyone in this beloved lakeside destination.

**DISCOVER THE
MEREDITH AREA!**

Visit MeredithAreaChamber.com for news, area information, weather, and many other visitor tips and helpful vacation planning information.



ENJOY ALL SEASONS!

Bob Kozlow Photography

Spring & Summer is when the Meredith area comes even more alive... From the sparkling lakes, rivers and streams, to the flowers and trees in all their abundant glory, this is the time when you just relax, breath in some fresh air and celebrate life! If you are an outdoor enthusiast, the options are endless and include water sports, boat rides, kayaking, tubing, fishing, swimming, recreational vehicles, horseback riding, picnics, nature trails and hiking, plus so much more. Maybe a boutique or spa is what you are looking for or picking up some fresh vegetables at a local farm stand. Check out our website for a listing of fireworks, barbecues, duck races, foot races and other fun events.

Autumn is spectacular (and fun)! The natural beauty of fall foliage is a 'must-see'. Witness the splendor from a boat, a panoramic overlook, a restored train car, or a drive on a country road. The crisp fall air and abundant garden harvests give us even more reasons to celebrate. Enjoy the creativity of family fun in a corn maze, farm-to-table feasts, holiday workshops, and a host of "Spooktacular" events.

The fun doesn't stop in the winter! Enjoy downhill skiing and snowboarding day and night, as well as cross country skiing. You'll find equipment rentals and information at many of our local recreational outfitters. Snowmobiling, ice skating, snowshoeing, ice fishing, ice sailing, sledding and tubing are other popular outdoor activities in our winter wonderland.

Even if you are not a winter sport enthusiast, you'll love the beautiful scenes of fresh snowfall in our quaint New England countryside. The Christmas season is filled with special holiday celebrations and annual winter spectator events fill out the calendar, with The Great Rotary Fishing Derby, World Champion Sled Dog Derby, and the New England Pond Hockey Classic. Plan a winter stay with us!

NEIGHBORING TOWNS



Ashland



Bristol



Center Harbor



Gilford



Holderness

ASHLAND

Ashland is home to a hand-built covered bridge and many old-fashioned fun celebrations.

BRISTOL

Bristol is the gateway to the beautiful Newfound Lake Region, with a variety of shops, including many antiques.

CENTER HARBOR

Situated with shoreline on Lake Winnepesaukee, Squam Lake and Lake Waukegan. Center Harbor was a favorite place for poet John Greenleaf Whittier and is the winter home of the M/S Mount Washington. In the summer, visitors and residents enjoy weekly concerts at the bandstand which overlooks the lake.

GILFORD

Located on the southern shore of Lake Winnepesaukee, Gilford is a recreation and entertainment center and the home of Gunstock Mountain Resort which offers a myriad of both summer and winter activities.

HOLDERNESS

Located on pristine Squam Lake. Holderness is home of the Squam Lakes Natural Science Center with many hiking trails and boat tours.

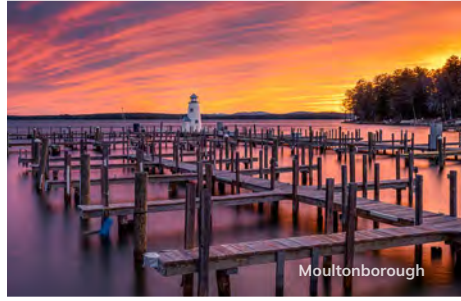
NEIGHBORING TOWNS



Town photos courtesy of Jeremy Noyes Gallery

MOULTONBOROUGH

Moultonborough boasts 68 miles of Lake Winnepesaukee shoreline and the home of famous steamers of yesteryear. The annual Lee's Mills Steamboat Rally delights viewers with parades of vintage whistling steamboats from near and far, every September. The historic Castle in the Clouds is nestled here in the Ossipee Mountain Range.



Moultonborough

SANDWICH

Sandwich is a picturesque town, with crafts, galleries and trailheads for many Squam range hikes. White clapboard colonial homes and spring flowering lilacs create a quintessential New England ambiance.



Sandwich

WEIRS BEACH

Weirs Beach is the home of the M/S Mount Washington and Endicott Rock, where the original surveyors of the Massachusetts Bay Colony signed their initials. Not to mention Motorcycle Week: The world's oldest motorcycle rally.



Weirs Beach

WOLFEBORO

The oldest summer resort in America, a town of beauty and history on the eastern shore of Lake Winnepesaukee. Wolfeboro is home to the New Hampshire Boat Museum & Vintage Boat Rides, and the turn-of-the-century Molly The Trolley.



Wolfeboro

LAKE LIFE



Bob Kozlow Photography

Explore around islands and bays in a kayak, paddleboard, or canoe. Rent a ski boat, a sailboat, or a pontoon boat for cruising, tubing, or fishing. Have fun in the sun on a sandy beach and swim in the refreshing water. Discover and learn about the natural beauty and wildlife of the area.

SANCTUARIES & CONSERVATION AREAS

Check each location for special events, presentations, such as guided excursions, interpretive exhibits and educational programs.

Chapman Sanctuary and Visny Woods,

Center Sandwich: A place for children, families, and adults to connect with nature and explore wildlife in their natural habitat, with more than 225 acres of woodland trails, meadows, streams and perennial gardens. ChapmanSanctuaryVisnyWoods.com

Lakes Region Conservatin Trust

A stewardship to protect and conserve the natural heritage of the Lakes Region. Over 27,000 acres, 21 summits, 33 miles of shoreline. LRCT.org

The Frederick and Paula Anna Markus Wildlife Sanctuary, Moultonborough

200-acre wildlife sanctuary with 5,000' of pristine shoreline. Introduction to various plant and animal species, diverse habitats, and greater understanding of loons and the natural world. Loon.org/markus-wls.php

Mead Base Conservation Center, Center Sandwich

Historic building and site, a home-base for day trippers and campers in the White Mountain National Forest. MeadBase.org



Clip this ad for 10% off "Loon's Feather Gift Shop"

183 Lees Mill Road, Moultonborough, NH
603-476-LOON(5666) • www.loon.org

The Loon Center

and the Markus Wildlife Sanctuary

Come learn about Loons!

- * Interpretive exhibits
- * Loon's Feather Gift Shop
- * Nature Trails!

Trails open dawn to dusk daily

Open every day 9-5, July - Mid Oct
Mon - Sat 9-5, Mid May - July
Thurs - Sat 9-5, Mid Oct - Mid May

Free Admission

PUBLIC BOAT LAUNCHES

Lake Winnepesaukee

Meredith Town Docks,
Lovejoy Landing Meredith Neck,
Center Harbor Docks

Lake Waukewan

Waukewan Street, Meredith

Squam Lake

Route 113, Holderness

Newfound Lake

Wellington State Beach, Bristol

PUBLIC BEACHES

Waukewan Town Beach

Waukewan Street in Meredith.
Enjoy beautiful views from a
sandy beach!

Weirs Beach

Large sandy beach in Laconia on
Lake Winnepesaukee with nearby
shops, restaurants & attractions.

AREA STATE PARKS

White Lake State Park

White Lake, Tamworth

Ellacoya State Park

Lake Winnepesaukee, Gilford

Wellington State Park

Newfound Lake, Bristol

WATER SPORTS & MARINAS

Dasilva Motorsports LLC

Rt. 25, Moultonborough

Sales & service of Bombardier recreational
products and Yamaha watercrafts. Parts,
accessories, and storage.

DasilvaMotorsports.com

603-253-6688

Meredith Marina

2 Bayshore Dr., Meredith

BOAT RENTALS daily & longer, with
ski packages. Full Service Marina:
New & Used Boat Sales, Service, Storage,
Marine Store and Gas. Open Year-round.

MeredithMarina.com

603-279-7921

Trexler's Marina Inc

15 Long Island Rd., Moultonborough

Full Service Marina specializing in Highfield
Boats, Pioneer, MirroCraft, Montego Bay
Pontoon, & Suzuki. New & Used Sales, Service,
BOAT RENTALS, Ships Store, Fuel, Valet and
Winter Storage.

Trexlers.com

603-253-7315

Wild Meadow Paddlesports

Rte. 25 Moultonborough

Kayak, Paddleboard, Canoe Rentals & Sales.
Paddle Center Harbor Bay or take to your
favorite spot. Excursions & classes.

WildMeadowPaddlesports.com

603-253-7536

Check our calendar at MeredithAreaChamber.com for
fishing competitions, boat shows and other water-oriented special events.

ADDITIONAL INFORMATION



TRAILS YEAR ROUND



Travel local trails for hiking, walking, snowshoeing, outstanding views, flora and fauna, and more...

Chamberlain-Reynolds Memorial Forest

Center Harbor: A short walk to “On Golden Pond” from Rte. 3

Frederick & Paula Anna Markus Wildlife Sanctuary

Moultonborough: 200 acres on the north shore of Lake Winnepesaukee with 2 miles of walking trails. Co-located with the Loon Center at 183 Lee’s Mills Road.

Hamlin-Eames-Smyth

Meredith: 715 acres, including 4 trails totaling over 7 miles, providing excellent hiking, snowshoeing, and wildlife viewing. Located off Chemung Road with views of the White Mountains, active beaver ponds, and old-growth forests.

Laverack Nature Trail at Hawkins Brook

Meredith: This scenic pedestrian trail features observation areas, wetlands, a boardwalk, signage, & educational components. Access behind Meredith Village Savings Bank on Rte. 25 or park at Prescott Park behind the tennis courts on Rte. 3.

Meredith Community Forest

Meredith: 186 acres off Jenness Hill Road with 3 trails totaling 4 miles providing excellent hiking, snowshoeing, wildlife viewing, a small waterfall, wetlands, and active beaver ponds.

Page Pond & Forest

Meredith: Good for all skill levels. 817 acres with 7 trails of over 10 miles, there are two trailheads located at Quarry Road and Barnard Ridge Road. The trail offers several activity options and is accessible year-round.

Swasey Park

Meredith: This hidden gem is located on High Street, just a short walk from Main Street. 7 acres with 6 trails totaling 1 mile and offers a waterfront canoe and kayak landing on the historic Waukewan Canal.

Waukewan Highlands

Meredith: 191 acres off Parade Rd. (Rt. 106). 4 trails of 3 miles, with one interpretive trail. Hart’s Pond (town’s previous water supply) is the centerpiece of the area.



TRAILS YEAR ROUND

Bob Kozlow Photography

Castle In the Clouds

Moultonborough: 30 miles of well maintained, marked, and mapped trails. Walk along cascading waterfalls, or opt for a more experienced hike with amazing views of the mountains and lakes. With over 5,000 acres and trails of all variations, you can spend the day hiking with the entire family. Trail heads are located at Shannon Pond or off Rte. 171, just south/east of the front gate to Castle in the Clouds.

Gunstock Mountain

Gilford: Overlook Trail intersects with the Saddle Trail, from which you can either go to the summits of Belknap and Gunstock, or come down the Brook Trail.

Mount Belknap

Gilford: Highest peak in the Belknap Range (2,382 ft.)

Mount Major

Alton: 1.5 miles to the summit, offering a panoramic view of Lake Winnepesaukee.

Mount Morgan

Holderness: 1.5 miles to the summit, which connects to Mt. Webster and Mt. Percival.

Red Hill

Center Harbor: 1.7 miles to the summit, which offers wonderful lake views of Squam and Lake Winnepesaukee.

West Rattlesnake Mountain

Holderness: 9 miles to summit, spectacular view, ledges - use caution.

SCENIC TOURS

Hit the road in a car, on a motorcycle, or on a bike for these favorite Lakes Region drives. Stop along the way to tour our quaint towns and take in the natural beauty of the Area.

Rte. 109:

Center Sandwich to Wolfeboro

3A & Newfound Lake Rd.:

Bristol to Hebron

Rte. 113:

Holderness to South Tamworth

Rte. 11:

Alton Bay to Glendale

COVERED BRIDGES

Covered bridges are true icons of New England and the Meredith Area is home to several. Bring your camera to these landmarks:

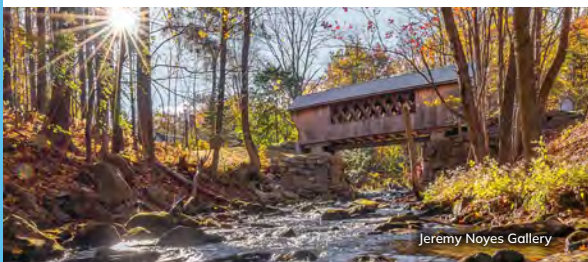
Blair Bridge, Campton

Durgin Bridge, Sandwich

Smith Millennium Bridge, Plymouth

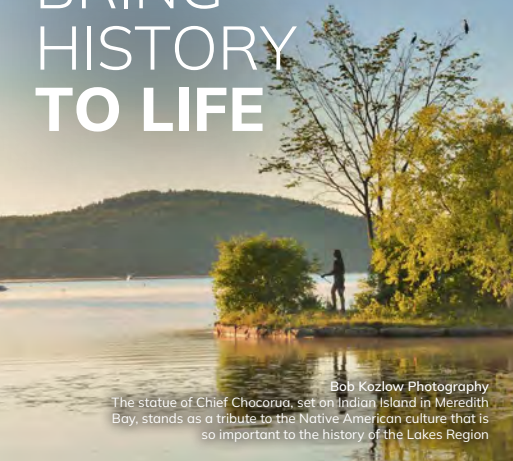
Squam River Bridge, Ashland

Tannery Hill Bridge, (footbridge) Gilford



Jeremy Noyes Gallery

BRING HISTORY TO LIFE

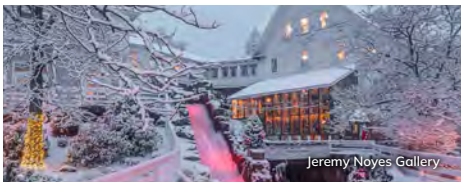


Bob Kozlow Photography
The statue of Chief Chocorua, set on Indian Island in Meredith Bay, stands as a tribute to the Native American culture that is so important to the history of the Lakes Region

Our Lakes Region was important in Native American cultures as well as to early settlers during America's Colonial period. History abounds in this area and our museums and historical societies have wonderful collections documenting this rich past.



"Archie," The life-size sculpture, a special installation in the Greater Meredith Sculpture Walk, was designed and created in bronze by sculptor Valery Mahuchy. The sculpture honors Meredith resident Bob Montana, who created the iconic comic character.



Jeremy Naves Gallery

In the 1800s Meredith was a prosperous mill town. The natural strong water flow from Lake Waukewan to Lake Winnepesaukee had been harnessed into an underground canal as a power source for the mills. Visionaries set out to preserve the charm and showcase the industrial history of Meredith, rehabilitating the deteriorating mill and uncovering the waterfall as a centerpiece to what is now Mill Falls Marketplace. The waterfall has become a landmark, where visitors watch the cascading waters flow down toward Lake Winnepesaukee.

"WINNIPESAUKEE",
a native Indian name meaning
"Smile of the Great Spirit."

Ashland Railroad Station Museum
28-32 Depot Street, Ashland

Belknap Mill Society
Downtown Laconia
Open year round

Bristol Historical Society
3 High Street, Bristol

Center Harbor Historical Society
Rt. 25B, Center Harbor
Open Saturdays in summer

Holderness Historical Society
Curry Place, Route 3, Holderness

Lake Winnepesaukee Historical Society
Route 3, Weirs Beach
Open year round

Libby Museum
755 North Main Street, Wolfeboro

Meredith Historical Society
Main Street, Meredith
Open Wed - Sat
Memorial Day through Labor Day

Moultonborough Historical Society
Route 25, Moultonborough

New Hampshire Boat Museum
399 Center Street, Wolfeboro

Museum of the White Mountains
34 Highland Street, Plymouth

Remick Country Doctor Museum & Farm
58 Cleveland Hill Road, Tamworth

Sandwich Historical Society
Maple Street, Center Sandwich
Open June through September
Also visit their Elisha Marston House Museum and Quimby Barn Museum

Thompson-Ames Historical Society
Gilford

Whipple House Museum
14 Pleasant Street, Ashland

Wright Museum of WWII
77 Center Street, Wolfeboro

If quality of life along with scenic beauty and ample recreational activities is what you desire, then the Meredith Area is the place for you!

Spend your days in our close-knit communities and avail yourself of a quality career position, or hop on I-93 for a simple commute or trip to the airport. High-speed internet and good cell services also make it convenient to telecommute from the beautiful Lakes Region.

Immerse yourself into our colorful past with our historical societies and/or be part of shaping our future by volunteering within our strong community service organizations. Houses of worship are plentiful, along with many clubs for all interests. Not only that, but New Hampshire is a very business-friendly state and has a low rate of unemployment. Oh, and have we mentioned the views?

HOUSES OF WORSHIP

Calvary Bible Church

On Main St. & St. James St., Meredith

A fellowship of believers committed to the gospel, the Bible, and life-giving worship. Our Sunday service meets at 10:30 a.m. (children welcome). Evangelical, NAE member. We are multi-generational and emphasize being a family of families in Christ. Why not give us a try this summer?

CalvaryBibleMeredith.com | 603-279-6025

First Congregational Church

4 Highland St., Meredith, NH

FCCMeredith.com | 603-279-6271

St. Charles Borromeo Catholic Church

300 NH Rt. 25, Meredith

Weekend Masses are Saturday 5 p.m., Sunday 8 a.m. & 10:30 a.m.

StCharlesNH.org | 603-279-4403

VOWS & VIEWS

Take your vows in a spectacular setting overlooking one of New Hampshire's most beautiful lakes. For engagement parties, rehearsal dinners, cocktails and receptions, select from unique venues: A lush garden terrace, a sparkling ballroom, a paddleboat cruise, or a farm-to-table feast. Happy honeymooners, bridal parties and guests have lodging options, from private cabins to luxurious resorts. A destination wedding with endless activities, restaurants, water adventures, shopping, and more. The Meredith Area Chamber of Commerce staff can help make your wedding memorable.

Info@MeredithAreaChamber.com | 603-279-6121



**LIVE,
WORK
& MAKE
MEMORIES**

JJ Photography

THINGS TO SEE & DO



Family-Oriented festivals, fairs, shows, contests and other special events take place year-round and our lakes present endless water activities. Enjoy parades, food and art events, car shows, holiday celebrations, apple picking, concerts, horseback riding, walking & hiking trails, wildlife sanctuaries, nature fests, church fairs, motorcycle races, sporting events and more! Be sure to visit our area attractions, which offer adventures, entertainment, and tours for all ages.

GREAT WATERS SUMMER CONCERTS



ABBY MUELLER TRIO
You've Got a Friend: The Music
of Carole, Joni, and James
THURSDAY, JULY 24 • 7:30 PM

**PETER CINCOTTI "Killer
on the Keys" Show**
SATURDAY, AUGUST 16 • 7:30 PM

TED VIGIL: Songs of John Denver
WEDNESDAY, AUGUST 27 • 7:30 PM
Featuring Regional Kingswood High School Students



Tickets on sale now! Call (603) 569-7710 or visit greatwaters.org

HUMAN NATURE Back to
the Sound of Motown
SATURDAY, JULY 12 • 7:30 PM

**ALTER EGO: The 80s & 90s
MTV Style Dance Show**
FRIDAY, JULY 18 • 7:30 PM

**BRASS TRANSIT: The Musical
Legacy of Chicago**
SATURDAY, AUGUST 2 • 7:30 PM

PROUD TINA
Ultimate Tribute to Tina Turner
SATURDAY, AUGUST 9 • 7:30 PM
Not Associated with the Estate of Tina Turner.

**ELEMENTS: The Ultimate
Earth, Wind & Fire Tribute**
SATURDAY, AUGUST 23 • 7:30 PM

Greater Waters Music Festival

54 N Main St, Wolfeboro

For intimate music experiences, join us at Castle in the Clouds under our acoustic tent with stunning mountain-top and lake views at sunset, or in Wolfeboro at Brewster Academy for Concerts in Town.

GreatWaters.org | 603-569-7710 | info@greatwaters.org

THINGS TO SEE & DO



Jeremy Noyes Gallery



LAKES
REGION
SYMPHONY
ORCHESTRA



www.LRSO.org



Performances November through May
Inter-Lakes Auditorium
Plymouth State University
Colonial Theatre

TEE OFF

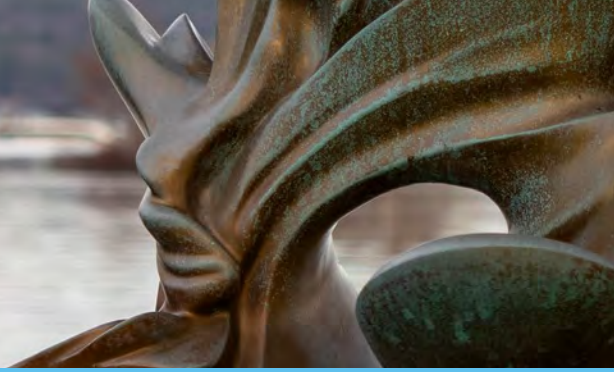
Birch Hill Country Club

258 Governor John Wentworth Hwy., Moultonborough
BirchHillCC.com | 603-476-5930

Waukewan Golf Club

166 Waukewan Rd., Center Harbor
WaukewanGolfClub.com | 603-279-6661

THINGS TO SEE & DO



A BIT OF CULTURE

Performing and visual arts enrich the quality of life in the Meredith Area. Our calendar includes many events and presentations which provide a bit of culture for the enjoyment of all ages. Live theatre productions, musicals, original plays, Shakespeare Company performances, bandstand concerts, live music, gallery exhibits, art classes, and fine arts and crafts shows are just a sampling of what you'll discover here!

the **WINNIPESAUKEE** playhouse



The Best Events in the Lakes Region!

Professional Theatre, Community Theatre, Educational Programs, Special Events, and MORE!

Event Schedule: WinnepesaukeePlayhouse.org • 33 Footlight Circle, Meredith, NH 03253



Meredith Sculpture Walk

The Greater Meredith Program's Sculpture Walk presents year-round outdoor public art for the enjoyment of residents and visitors. See nearly three dozen unique works by sculptors from all over the Northeast. Let the walking map guide you on this fascinating tour for all ages to enjoy.

View and/or Download the Map:
GreaterMeredith.org/sculpture-walk

THINGS TO SEE & DO

Photos on this spread, courtesy of JJ Photography

DIVE INTO ART!

The Lakes Region Fine Arts & Crafts Festival is one of the oldest events in the Lakes Region and hosted by the Meredith Area Chamber of Commerce traditionally the weekend before Labor Day. Held on Main Street

and amid the shops at the Mill Falls Marketplace this Festival, from the beginning, has attracted high quality artists and craftsmen and continues to be one of the most respected arts and crafts events in the Lakes Region.

The 80+ juried artists and craftsmen present high quality merchandise. Featured in the craft category will be pottery, leather, wood products, weaving, quilting, metal sculpture, jewelry, baskets, dolls, and toys. Art work includes watercolor, oil paintings, pen and ink drawings, photography, and theorem paintings.

Musical entertainment, demonstrations and culinary delights add to the festive atmosphere as you stroll through the artisans and beautiful Meredith scenery.

The Lakes Region



**JJ
PHOTOGRAPHY**
NH - CONCERT, EVENT & COMMERCIAL

JARON JENKINS

JJ PHOTOGRAPHY NH

COVERS EVENT, CONCERT AND
COMMERCIAL NEEDS FOR LOCAL
BUSINESSES, NONPROFITS AND MUSICIANS.

Photography
featured
throughout
brochure

JJPHOTOGRAPHYNH@GMAIL.COM · JJPHOTOGRAPHYNH.MYPORTFOLIO.COM

SPECIALTY SHOPS & CRAFTS

The Meredith Area is a haven for shoppers. Our many distinctive specialty shops and outlets, antique and craft galleries, as well as our unique boutiques, offer interesting and one-of-a-kind items for the most discriminating shopper. December shopping is especially festive, featuring holiday concerts, parades, and open houses, in addition to countless high-quality craft fairs. Discover our exceptional shopping choices... tax free too!



Annalee Gift Shop

339 Daniel Webster Hwy., Meredith
Heartfelt Gifts and Seasonal Decorations.
Annalee.com | 800-433-6557

OPEN DAILY
10AM - 5PM

339 DW HWY. MEREDITH, NH
ANNALEE.COM | 800-433-6557



WOOD HOME DECOR & GIFTS

TURNED WOOD
CUTTING BOARDS
CARVED WALL ART

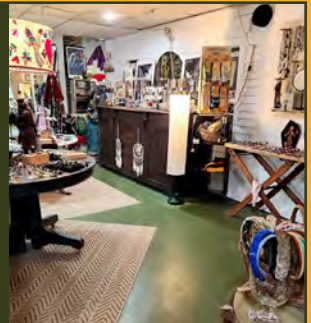
5 MAIN ST.
MEREDITH, NH
(603) 417-4352
ARTOFTURNING.COM



BH BOHEMIAN HOME

LIVE WITH THINGS YOU LOVE

23 Main St., Center Harbor
BohemianHome.net | 603-250-8009



SPECIALTY SHOPS & CRAFTS

Jeremy Noyes Gallery

Bootlegger's Footwear Center

Downtown Meredith. Conveniently located "at the lights"
Over 100 of the best brand names in footwear for the
entire family. All at "Low Bootlegger prices every day."
BootLeggersFootwear.com | 603-279-SHOE

Moulton Farm

18 Quarry Rd Meredith
Farm market, bakery,
garden center.
MoultonFarm.com
603-279-3915



MOULTON FARM



18 Quarry Road, Meredith 03253
603-279-3915 MoultonFarm.com

- Farm market, bakery & garden center
- Food truck featuring seasonally inspired foods from our farm
- Fresh seafood Thursday to Saturday
- "Pick your own" flowers in summer
- Corn maze and pumpkin patch in fall
- Wreaths made at our farm & NH Christmas trees in November and December



Invite more *beauty + inspiration* into your home and office with our high-quality photographic images of the Lakes Region and beyond.

Printed on metal, acrylic and canvas.
Complimentary in-home art consultation.
Meredith delivery and installation with the purchase of a 20" x 30" print or larger. Please get in touch with us for a custom quote.

May our artwork inspire your life and soothe your soul!

Jeremy
NOYES
FINE ART PHOTOGRAPHY

Gallery: 23 Main Street, Unit 1, Meredith, NH
Info@JeremyNoyesPhotography.com • 858-761-2504
JeremyNoyesPhotography.com

Photography featured throughout brochure

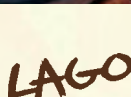
FOOD & SPIRITS

New Hampshire's Common Man Family in *Meredith!*



RICH TILTON PHOTOGRAPHY

*On the shores of
Winnepesaukee!*



(603) 279-2253



(603) 279-5221



(603) 279-3003



(603) 279-3445

Menus | Directions | Gift Cards | theCman.com

And entertain at your own lakeside retreat... LakehouseBoutiqueCatering.com



Frog Rock Tavern

Find us on Facebook: [/FrogRockTavern](https://www.facebook.com/FrogRockTavern)

Office@FrogRockTavern.com • (603) 677-7625
67 Main St, Meredith, NH

Downtown Meredith • Just a short walk from the Town Docks

Giuseppe's Pizzeria & Ristorante

Mill Falls Marketplace, Meredith

Very Musical, Very Italian & Very Good! A full-service restaurant with a festive Italian atmosphere. Serving Gourmet Pizza, Pasta, Steak, Veal, Chicken, Seafood, Vegetarian, Vegan, Gluten-Free, Salads, Sandwiches and Desserts. Featuring a great selection of wine and beer with two full Bars, weekend dancing and "Live" Acoustic Musical Entertainment 7 nights a week! Reservations highly recommended!
GiuseppesNH.com | 603-279-3313

Very Music Very Italian & Very Good!



Giuseppe's Pizzeria & Ristorante

Best Italian
Restaurant



This unique and popular family owned and operated restaurant is one of the Lakes Region's most loved since 1989!

Serving Award-Winning Gourmet Pizza, Pasta, Seafood, Steak, Chicken, Veal, Vegetarian, Vegan, Gluten-Free, Soup, Salads, Sandwiches, Desserts, Beer, Wine and Spirits!

Lunch and Dinner Daily ~ Live Music Nightly!

Reservations are highly recommended and greatly appreciated!

Reserve a table in our Main Dining Room, Greenhouse Room, Grotto, or dine Alfresco on our charming Patio overlooking the Waterfall at Mill Falls

Call (603)279-3313 for Reservations and Take Out

Corner of Routes 3 & 25 • Mill Falls Marketplace, Meredith, NH

For Menu, Hours & Info. visit www.giuseppesnh.com

Best Pizza



FOOD & SPIRITS

Gusto Italian Café & Ristorante

23 Main Street, Center Harbor

Breakfast, lunch, and dinner. Serving authentic Italian food all day, pastries, coffee, sandwiches, pasta, homemade sausage, and a full bar, an amazing view, and the best wine list. **Gusto Market**, right behind the restaurant, for all your gourmet to-go meals, including cured meats, fresh pasta, and chicken parm, all homemade by Gusto.

GustoCafeNH.com

Café 603-250-8002 | Market 603-250-8080



Hart's Turkey Farm Restaurant

Rte 3, Meredith

Family Dining with Homestyle cooking, owned and operated by the Hart family since 1954. Featuring Turkey, Prime Rib, Steaks, Seafood and Pasta. Children's Menu. Serving Lunch and Dinner Daily. Cocktail Lounge. Gift Shop. Handicap accessible.

HartsTurkeyFarm.com | 603-279-6212



Fine Asian Fusion Cuisine in the NH Lakes Region.

Serving Lunch & Dinner. Dine-in or Take Out Available.

64 Whittier Hwy., Moultonborough | LemongrassNH.com | 603-253-8100

WHERE TO STAY

Jeremy Noyes Gallery

With a long tradition of hospitality, the Meredith Area offers a myriad of accommodations. You will find abundant choices of quaint New England inns and B&Bs, modern hotels and lodges, cozy cottages and efficiencies, spacious suites, and waterfront cabins. Our camping choices are equally varied and weekly, monthly or seasonal rentals are available with accommodations ranging from secluded lakeside cabins to waterfront retreats from our Vacation Rental companies.

LODGING

Center Harbor Inn 294 Whittier Hwy. (Rte. 25), Center Harbor

Experience beachside luxury and small-town charm. Our freshly renovated rooms overlook a private sandy beach and docks on Lake Winnepesaukee. Gorgeous views and close to attractions.

info@centerharborinn.com | CenterHarborInn.com | 877-418-5804

Center Harbor Sutton House B & B 251 Whittier Hwy. (Rte. 25), Center Harbor

Victorian mansion with 8 private bathroom suites, 4 king size and 4 queen size guest rooms include twin beds, roll-away beds, or sofa bed options. Room ceiling fans, TV, mini refrigerators, A/C, and wifi. Pool, fire pit ring, BBQ grills, patio tables and seating, plus porch rocking chairs. Walk to eateries, shops, beach, aquatic sports, on site trailer parking. Family, pet and senior friendly with 1st floor rooms and easy access ramps.

Sutton-House.com | 603-253-9750

Half Moon Motel & Cottages PO Box 5183, Weirs Beach

At the center of Weirs Beach, closest to public beach, boardwalk, lake cruises, train rides, shopping, dining, amusements. Modern, comfy units all have a great scenic view. King-size pool.

halfmoonmotel@weirsbeach.com | HalfMoonMotel.com | 603-366-4494

Mill Falls Resort Collection at the Lake 312 Daniel Webster Hwy., Meredith

Step back in time while experiencing the luxuries of today when you discover Mill Falls Resort Collection at the Lake, located along the shores of Lake Winnepesaukee in the quaint town of Meredith. Choose from one of four inviting Inns all linked by a lakefront boardwalk and discover the Cascade spa, EKAL activity center, 5 restaurants and 12 shops in our historic marketplace. Life is better at the lake!

MillFalls.com | 866-523-2526

Summit Resort 177 Mentor Ave., Laconia

Enjoy our four-season resort centrally located near Lake Winnepesaukee. Ideal for families, our spacious, 2 bedroom, 2 bathroom suites provide privacy for six with the convenience of a full kitchen and dining area. Onsite amenities including a large indoor pool with slides, racquetball courts and a fitness center. Close to a variety of area attractions.

info@summitresortnh.com | SummitResortNH.com | 800-918-6121

Air Conditioning	Kitchenettes	Television	Fireplace(s)	Whirlpool/Hot Tub	Indoor Pool	Outdoor Pool	Beach	Restaurant	Handicap Access	Pets Allowed	Wi-Fi	Open Year Round
●	●	●	●				●	●	●	●	●	●
●	●	●	●	●	●	●	●	●	●	●	●	●
●	●	●	●	●	●	●	●	●	●	●	●	●
●	●	●	●	●	●	●	●	●	●	●	●	●

BEACHSIDE LUXURY, SMALL TOWN CHARM
 PICTURE YOUR STAY ON THE BIG LAKE

CENTER HARBOR
 INN

FOR MORE INFORMATION CALL: 1-877-418-5804 · CENTERHARBORINN.COM

WHERE TO STAY



Life is Better AT THE LAKE.

Relax here.



MF
MILL FALLS
RESORT COLLECTION
at the lake

4 Inns • Cascade Spa
12 Unique Shops
5 Distinctive Restaurants
EKAL Lake Activity Center
Lake Winnepesaukee

DANIEL WEBSTER HWY. • MEREDITH, NH • 866-523-2526 • MILLFALLS.COM

EXPERIENCE CAMPING IN NH

Harbor Hill Camping Area

189 NH Rt. 25, Meredith

A Seasonal Camping Resort offering traditional family camping. Immaculate grounds, quiet hours enforced. Camp store, rec hall, playgrounds, athletic field, sports court, pool, laundry, nature trails, town beaches.

HHCamp.com | 603-279-6910

Long Island Bridge Campground, LLC.

29 Long Island Rd., Moultonborough

Family camping on the shores of Lake Winnepesaukee. Fish, swim and relax with us. Waterfront sites, wooded tent sites & full hook-up RV sites with free cable TV. Private beach, playground, laundry, boating. Limited RV supplies, small store, some pet restrictions. Free WiFi. All sites with fire ring and table.

LongIslandBridgeCampgroundNH.com | 603-253-6053

Okie Dokie Cabins Cabin Rentals

64 Depot Road Tamworth, NH

A unique camping experience... is waiting for you! Okie Dokie Cabins are nestled close to the village of downtown Tamworth, NH. These custom-built cabins offer a variety of layouts to choose from for your vacation needs. Look forward to relaxing in the quiet woods along the Swift River.

OkieDokieCabins-NH.com | 603-707-7257



Bob Kozlow Photography

REAL ESTATE & VACATION RENTALS

At The Lake Vacation Rentals

60 Whittier Hwy., #6, (Rt 25) Moultonborough

#1 in the Lakes Region and in business since 1980, At The Lake Vacation Rentals, LLC is a full-service, locally owned and operated firm focusing exclusively on vacation rentals in NH's Lakes Region. Whether you're planning a vacation to the lake or looking for an experienced partner to help put your vacation home to work for you, please give our local team a call. **Book Online at LakesRegionRentals.com | 603-253-9871 or 888-359-3858**



VIEW ALL PROPERTIES - BOOK ONLINE
LAKESREGIONRENTALS.COM

Luxury Homes
Waterfront Homes
Idyllic Lakefront Cottages

603.253.9871



Long Term Rentals | Winter Rentals | Vacation Rentals

YOUR LAKES REGION RENTAL EXPERTS

A COMPANY YOU CAN TRUST

603.677.7075

WWW.BREAKAWAYRENTALHOMES.COM



Four
Seasons

Sotheby's
INTERNATIONAL REALTY

**Life is better
lakeside.**



273 DANIEL WEBSTER HIGHWAY, MEREDITH, NH | O: 603.677.7012 | FourSeasonsSIR.com

Each Office is Independently Owned and Operated.

Four Seasons Sotheby's International Realty

3 Main St., Meredith

Buying and selling homes across the Lakes Region from Winnepesaukee to Squam and beyond! info@FourSeasonsSIR.com | FourSeasonsSIR.com | 603-677-7012



“Let us help you find your next landing spot!”

MEET OUR AGENTS



Bronwen Donnelly,
Owner, Broker
Cell (603) 630-2776



Amy Effline,
Associate Broker
Cell (603) 520-7466



Melissa Cribble,
Realtor
Cell (603) 682-2222



Maggie Braxton,
Associate Broker
Cell (603) 520-1505



Gail DiGangi,
Realtor
Cell (603) 520-5978



Christopher Williams,
Realtor
Cell (603) 340-5233



Ellen G. Watts,
Realtor
Cell (603) 731-0442



Lisa Wardlaw,
Associate Broker
Cell (603) 491-5216



Meg Wardlaw Marstrand,
Realtor
Cell (801) 699-8874



Jim Wiedman,
Realtor
Cell (603) 387-2820



John D. Peterson, Jr.,
Realtor
Cell (603) 998-9871



Scan here
to find your
Dream Home

285 Daniel Webster Highway - PO Box 881, Meredith, NH 03253
603-677-7007 • MeredithLanding.com

Roche Realty Group, Inc.

97 Daniel Webster Hwy.

Locally owned with over 10,000 closed transactions. RocheRealty.com | 603-279-7046

SPECIALIST & PROFESSIONAL SERVICES



Granite VNA

Serving people of all ages in 82 communities across the Greater Capital Region and Central New Hampshire by providing home care, hospice, palliative, pediatric and maternal child health services, and wellness programming.

GraniteVNA.org | 800.924.8620

King Insurance Partners

21 Meadowbrook Lane # 11 Gilford

With 50 years of industry experience, King Insurance Partners provides a full line of competitively priced, comprehensive coverage solutions including home, auto, private client, boat, and more. wendy.bagley@king-insurance.com | 603.217-2432



KING
RISK PARTNERS

BEST INSURANCE AGENT

(603) 217-2432

wendy.bagley@king-insurance.com



LAKES REGION COMPUTER

The one-stop shop for all your technology needs in the Lakes Region since 1996.



Visit our Retail Store! Business IT Management

- Verizon Authorized Retailer
- Apple Service Provider
- Macs, PCs, smartphones, and accessories
- iPhone and Computer Repairs
- Data and Email Protection
- Cybersecurity
- VoIP Phone systems
- WiFi Installations
- Security Cameras and more!

603-253-9847 | 12 Main Street, Center Harbor, NH | lakesregioncomputer.com

SPECIALIST & PROFESSIONAL SERVICES

Jeremy Noyes Gallery

HOME HEALTHCARE & HOSPICE *for over 100 years*



Take Comfort in Care

(603) 279-6611 or www.LRVNA.org

THE LAKES REGION'S MOST TRUSTED PARTNER



Robert J. Kozlow, D.D.S. P.L.L.C.
14 Plymouth St., P.O. Box 204, Meredith
A general dentistry family practice offering a comprehensive range of restorative and hygiene services as well as emergency care.
RobertKozlowDDS.com | 603-279-7138



Photography featured throughout brochure



SPECIALIST &
PROFESSIONAL
SERVICES



PRO SPOTLIGHT



VERTICAL ENTERTAINMENT

Serving New England Since 2006!

THE PARTY PEOPLE—Lakes Region's
One Stop Shop for all your event rental needs!

Your Event Just Leveled Up

Looking to turn your event into the most talked-about party of the year? We've got the rides, the slides, and the wild vibes to make it unforgettable. From school fairs to town days, birthdays, backyard bashes to corporate blowouts—we bring the action to YOU!

Fan-Favorite Attractions:

- Mechanical Bull: Buck, spin, and laugh till you drop. A guaranteed crowd magnet!
- LED Mini-Golf: Glowing fun for all ages, day or night!
- Rock Climbing Walls: Multiple sizes to test your skills—race your friends to the top!
- Casino
- Bungee Jumping: Jump. Flip. Fly. Repeat!
- Inflatables & Obstacle Courses: Bounce, crawl, conquer, and giggle your way through!
- Water Slides: Cool off with giant, thrilling slides, water combos and water tag for all ages.
- Foam Cannons: It's a dance party in a cloud of bubbly foam!

Why Choose Vertical?

- Fully Insured & Safety Certified
- Pro Setup + Friendly, Trained Staff
- Custom Packages for Any Budget
- One Call = Total Fun Delivered

Let's Make it Epic!

(603) 491-1598 | (603) 387-9359

events@verticalentertainmentnh.com

VerticalEntertainmentNH.com



Serving NH
& Beyond

Ames Associates, LLC
Environmental Land Use
Consultants

164 NH Rte. 25, Meredith
AmesAssociates.com
603-279-5705

Hayward & Company
153 Pease Rd., Meredith
HaywardAndCompany.com
603-256-5919

NH Snow Pros, LLC
71 NH Rte. 104, Suite 4-40, Meredith
NHSnowPros.com
603-387-9902

Overhead Door Options
185 Waukevan St., Meredith
OverheadDoorOptions.com
603-280-4322

HOME SPECIALISTS



DESIGN.
BUILD.
ENJOY.

NOW OFFERING Cleaning Services

www.StephensLandscaping.com



Jeremy Noyes Gallery

BROCHURE DEVELOPMENT

Local creative developer and designer
of the MACC brochure

Local print company who brought the
MACC brochure from digital to physical

**Lilly
DESIGNS**
CREATIVELY COMMUNICATE

Brand Development • Graphic Design

LillyDesigns.biz

JUST HIT PRINT

- Printing
- Promotional Items
- Screen Printing
- Embroidery
- Signs
- Team Apparel

justhitprint.com
603.279.5939

131 Lake Street,
Unit 15
Laconia, NH

MACC MEMBERS



3 Lakes Landscaping
48 Main Café & Creperie
603 Solar
Abakee Cottages
Abundantly Yours
Adobe
Aiken Financial Planning LLC
Altrusa Meredith NH
Ambrose Brothers, Inc.
AmeriGas Propane Vendor # 300010259
Ameriprise Financial Services, Inc.
Ames Associates LLC
Annalee Dolls, Inc.
Art of Turning
Ashland Lumber Co. Div. Of Belletetes, Inc.
At The Lake Vacation Rentals
Aubuchon Hardware - Meredith
Bank of New Hampshire
Barn Z's LLC
Belknap Landscape Company
Better Homes and Gardens The Masiello Group
Birch Hill Country Club
Blissful Bakery
Bohemian Home (Live with Things You Love)
BootLeggers Footwear Center
Boutin Lowman PLLC
Brady's Personal Chef Services
Break Away Vacation Rentals & Property Management
Bright Spaces Concierge, LLC
Bryant Paving LLC
Camp at Mill Falls
Canoe A Restaurant & Tavern
Capital Well
Case N' Keg
Castle in the Clouds
Castleberry Fairs & Festivals
Center Harbor Inn/Steele Hill Resort
Center Harbor Sutton House B & B
Cerutti Contracting LLC
Christopher P. Williams
CMG Home Loans
Cormack Construction Management, Inc.
Cross Insurance - Laconia
Crosspoint Associates, Inc.
daSilva Motorsports LLC
Dead River Company
Donahue, Tucker, Ciandella, PLLC
Donovan Tree Experts, LLC
Dunkin Donuts
E.M. Heath, Inc.
Edward DeTolla, DDS PLLC

Elite Mortgage Group
Emery & Garrett Groundwater Investigations
Energysavers Inc.
Etcetera Shoppe
Foley Oil Company
Forestview Manor Assisted Living
Four Seasons Sotheby's International Realty
Franklin Savings Bank
Frasca Title LLC
Freedom Boat Club of the Lakes Region
Full Circle Vinyl
Funspot
Garden Mates LLC
Geneva Point Center
George's Diner LLC
Giuseppe's Showtime Pizzeria
Golden View Health Care Center
Goodhue Meredith
Granite VNA
Great Northern Trading Company
Great Waters
Gusto Italian Café
Half Moon Motel & Cottages
Hannaford Supermarket
Harbor Hill Campground
Hart's Turkey Farm Restaurant
Hayward and Company Log & Timber Homes, LLC
Hermit Woods Winery & Eatery
Home Comfort
Howland Insulation & Home Improvement, LLC
Innisfree Bookshop
Interlakes Animal Hospital
Inter-Lakes Athletic Booster Club
Inter-Lakes Builders, Inc.
Interlakes Community Caregivers
Inter-Lakes Grandparents' Club
InterLakes PTO
Interlakes Summer Theatre
Ippolito's Furniture
Jennifer C. Williams, CFP(R)
Just Hit Print
K-2 Electric, LLC
King Insurance
Lacewood Group Inc.
Laconia Harley Davidson
Lady of the Lake Realty
Lago
Lake Libations Mobile Bar
Lake Life Realty
Lake Winnepesaukee Alliance
Lakes & Mountains Tent & Event

MACC MEMBERS

Jeremy Noyes Gallery

Lakes Region Airport Shuttle Service LLC
Lakes Region Community Services
Lakes Region Computer LLC
Lakes Region Oral Surgery
Lakes Region Symphony Orchestra
Landscapes By Tom, LLC
Law Offices of Mark H. Lamper, Esq.
Lemongrass Restaurant & Sake Bar
LIFE Medi Spa
Lighthouse Contracting Group LLC
Long Island Bridge Campground, LLC
Loving Volvo at Meredith
Make-A-Wish New Hampshire
Maxfield Real Estate
Melcher & Prescott Insurance
Mercury Enterprises, LLC
Meredith Inn
Meredith Insurance Agency, LLC
Meredith Landing Real Estate
Meredith Lions Club
Meredith Marina
Meredith Neck Farm
Meredith Public Library
Meredith Village Savings Bank
Meredith Whole Living Center, LLC
Meredith Woods
Middleton Building Supply, Inc.
Mill Falls At The Lake
Miracle Farms Landscape Contractors
Miracle Farms Property Management
Moulton Farm
Natural Retreats - Lakes Region
NAZ Bar & Grill- Blue Bistro
New Hampshire Boat Museum
New Hampshire Electric Co-op
NH Humane Society
NHSnowPros - NHDirtPros
Normandin, Cheney & O'Neil, PLLC
Northway Bank
Octagon Cleaning & Restoration
Overhead Door Options
Paquette Signs
Pella Windows & Doors
Pilates Place at the Lake
Pipe Connections, LLC
R.N. Peaslee & Sons, Inc.
RE/MAX Innovative Bayside
Realgreen Services
Restoration Acres Farm
Rise LLC
Robert J. Kozlow DDS PLLC

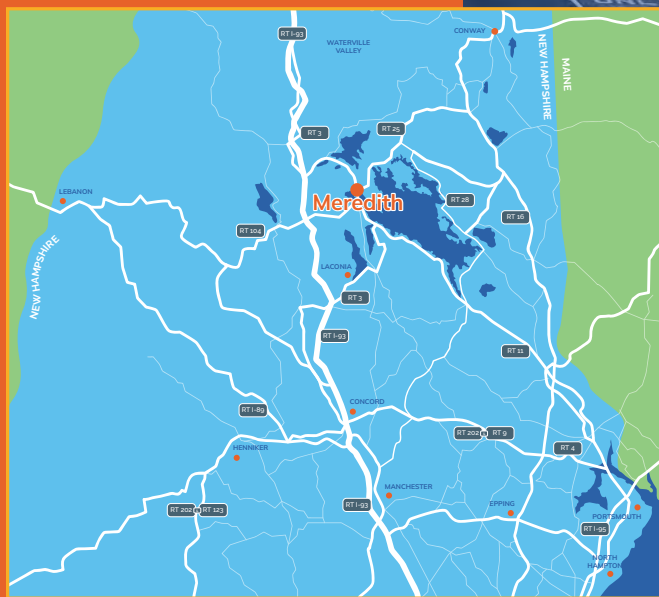
Roche Realty Group
Rowell's Services
Sam Seeley / Keller Williams Lakes and Mountains...
Samyn-D'Elia Architects, P.A.
Scott Burns Landscaping
Scott Compton Builders LLC
Skal
Sky's Carpentry on Lake Winnepesaukee, LLC
Smiley Publishing Group, LLC
Snap Root Digital Marketing
Sparkle Clean Car Wash
Spaulding Academy & Family Services
Speare Memorial Hospital/MedCheck Urgent Care
Squam Lake Inn
Stafford Oil Company, Inc.
Steele Hill Resorts
Stephens Landscaping Professionals LLC
Summit Resort/Steele Hill Resort
Taylor Community
The Laconia Daily Sun
The Lakehouse @ Church Landing
The Loon Center
The Sandwich Fair
The Taphouse Lake Winnepesaukee
The Winnepesaukee Playhouse
Thomson Tree Service & Excavation
Town Docks Restaurant
Trexler's Marina, Inc.
Twin Barns Brewing Company
Twin Tamarack Family Camping
Unwind Luxury Vegan Beauty
Verizon Wireless Zone of Meredith
Vertical Entertainment
Village Kitchen Restaurant
Walter's Basin Restaurant
Watermark Marine Systems
Waukegan Golf Club
Wescott Law, P.A.
Wicked Cool Mechanical
Wild Meadow Paddlesports
Wilkinson Bean Funeral Home
Wine'ing Butcher (LTD Company)
Winni Chick
Winni Pest Solutions, LLC
Winnepesaukee Flagship Corp.
Winnepesaukee on Pond Tunes
Winnepesaukee Scenic RR
Winnepesaukee Self Storage
WORK Lakes Region
ZenBusiness



Nestled among five of New Hampshire's largest lakes, the Meredith Area is located in the center of New Hampshire, just off I-93 at Exit 23E. It's an easy 2 hour drive from Boston. The village of Meredith is at the junction of Routes 3 and 25, two well-maintained roads which circle the Lakes Region.



Jeremy Noyes Gallery



Meredith Area Chamber of Commerce

272 Daniel Webster Hwy.,
Meredith NH

P.O. Box 732,
Meredith NH 03253-0732



Digital Brochure



Town & Leisure
One of the Top 10
Best Small Towns on
the East Coast



Women's Day
Most Beautiful Small
Town in NH (2021)



Yankee Magazine
29 Best Cozy New
England Winter
Towns (2022)